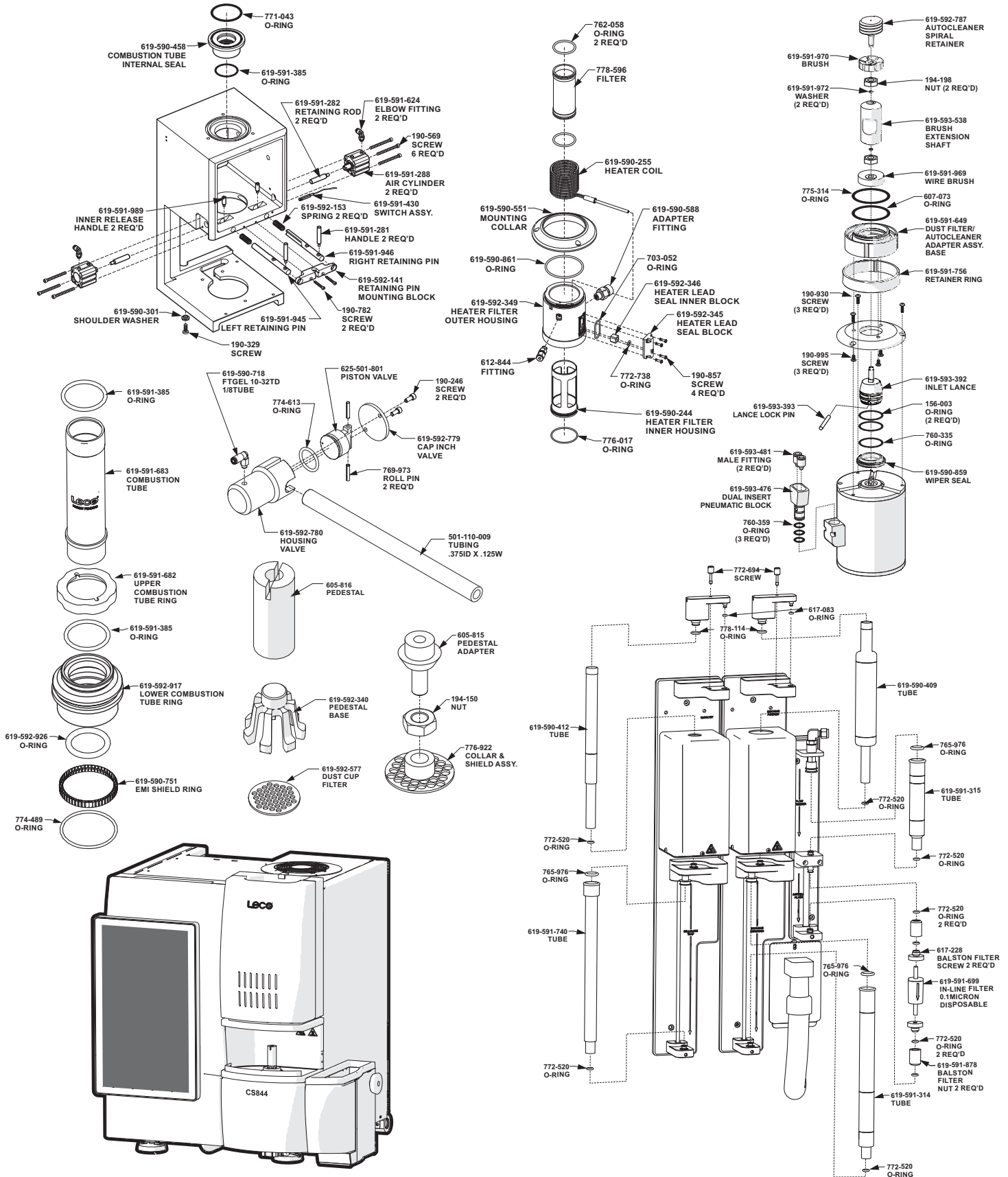


Note: Part numbers and standards' values may change. Consult LECO for the latest information.



See reverse side for contact information

COMBUSTION SUPPLIES

528-018	Ceramic Crucible 1000/box
528-018HP	High Purity Ceramic Crucibles 1000/box
528-050	Ceramic Crucible 500/box, bags of 50
619-880	Ceramic Crucible Cover with Hole, 1000/box
619-880-100	Ceramic Crucible Cover with Hole, 100/box
619-591-683	Combustion Tube (Quartz)
778-596	Dust Filter (SST Filter)
619-593-443	Lance Cleaning Wire
619-591-970	Lower Cleaning Brush (Reworked Brush)
762-058	O-ring, Dust Filter
605-816	Silicon Nitride Pedestal
619-591-622	Vacuum Cleaner Filter; Disposable (Round Style)
619-591-454	Vacuum Cloth Bag Filter (Round Style)
619-591-456	Vacuum HEPA Filter (Round Style)
782-880	Filter (Square Style)
619-593-542	Vacuum Hose (Square Style)
501-082	Wire Cleaning Brush

ACCELERATORS

502-492	Copper Accelerator HP (0.44 lb./200 g)
501-263	Copper Metal Accelerator 1.36 kg (3 lb.) bottle
501-640	Copper Metal Accelerator 9 kg (20 lb.) container
501-264	Copper Metal Accelerator, 227 g (0.5 lb.) bottle
502-231	High Purity Iron Accelerator 454 g (1 lb.) bottle
501-077	Iron Chip Accelerator 0.9 kg (2 lb.) bottle
763-026	LECOCEL® 13.6 kg (30 lb.) container
763-266	LECOCEL® 2.27 kg (5 lb.) bottle
502-297	LECOCEL® II (30 lb./13.6 kg)
501-008	LECOCEL® II 2.27 kg (5 lb.) bottle
502-173	LECOCEL® II HP 750 g (1.7 lb.) bottle
763-263	LECOCEL® III 2.27 kg (5 lb.) bottle
763-027	LECOCEL® III 13.6 kg (30 lb.) container

CATALYSTS AND REAGENTS

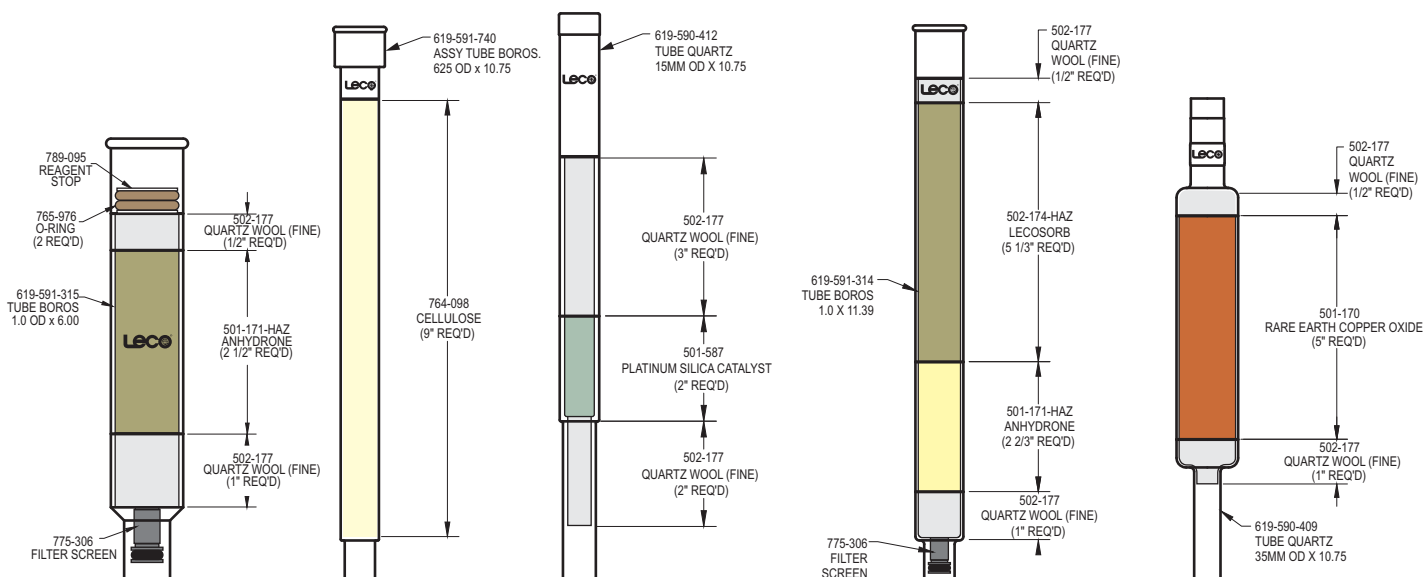
501-171-HAZ	Anhydron 454 g (1 lb.) bottle
764-098	Cellulose 454 g (1 lb.) package
502-174-HAZ	Lecosorb 500 g bottle, 20–30 mesh
502-176-HAZ	Lecosorb 500 g bottle, 8–20 mesh
501-587	Platinum/Silica 15 g bottle
502-177	Quartz Wool 50 g package
501-170	Rare Earth Copper Oxide 50 g bottle

REAGENT TUBES

619-590-412	Quartz Tube, requires one (1) 778-114 O-ring and one (1) 772-520 O-ring for sealing
619-590-409	Quartz Tube, requires one (1) 778-114 O-ring and one (1) 772-520 O-ring for sealing
619-591-740	Glass Tube, requires one (1) 765-976 O-ring and one (1) 772-520 O-ring for sealing
619-591-314	Glass Tube, requires one (1) 765-976 O-ring and one (1) 772-520 O-ring for sealing
619-591-315	Glass Tube, requires one (2) 772-520 O-ring and one (1) 765-976 O-ring for sealing

OPERATION ACCESSORIES

619-591-699	Balston Filter
761-929	Crucible Tongs
619-590-751	EMI Gasket
625-711-260	Screen/Doser Removal Tool
775-306	Secondary Filter, 10 micron
503-032	Glass Accelerator Scoop
773-579	Metal Accelerator Scoop
764-078	One gram Weight
760-138	Sample Tweezers
501-241	Vacuum Grease
502-023	Tube Funnel
762-515	O-Ring Removal Tool
502-237	Cleaning Wipes
619-592-597	Dust Removal Tool



Please Note: Quartz Tubes are typically utilized for higher temperature applications (i.e. catalyst tubes). Glass reagent/filter tubes are designed for lower temperature applications. Glass tubes should not be used in place of quartz tubes.

NOTE: Part numbers and standards' values may change. Consult LECO for latest information.

United States: 800-292-6141 • Canada: 800-268-0215 • Other Countries: 269-985-5496
info@leco.com • www.leco.com • ISO-9001:2015 Q-994 • © 2019 LECO Corporation

LECO
EMPOWERING RESULTS